

TRIGGER\$

Economic & Technical Analysis for the Active Trader

www.triggers.ca

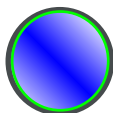


INTER-ISSUE UPDATE

PLAN 2

Tuesday April 30th, 2013

**MATA
DRIVER\$**



DRIVER\$ identify what is currently moving the selected market. It is usually another market or security that is influencing the movement of the market in question.

**TRIGGER
&
HPTZ**

TRIGGER\$ highlight the important TA levels and 'tools' that will most likely be market triggers & target areas, and/or will cause a market reaction of some order. They are grouped in order of occurrence Above & Below the current market position.

DISCLAIMER: Inter-Issue UPDATES is not a Trade Advisory Service. This is a Technical Analysis service supplementing the monthly analysis found in our monthly publications. The point of the Updates is to provide a more fluid, stable and up-to-date analysis - more so than could be delivered in just a monthly publication alone. **TRIGGER\$ & TARGETS** are markers that can be used in measuring / determining trend movement and changes. **They are Not trading signals or calls.**

*click arrows in the index to go to chart
click arrows in charts to return to index*

DAILY

HOURLY

S&P 500



ECONOMIC & EVENT CALENDARS

TA Glossary

TRIGGER\$ Trading Methodology Performance Update

Weekly & Long-Term Perspectives can be found online at www.triggers.ca



**UP
TREND**

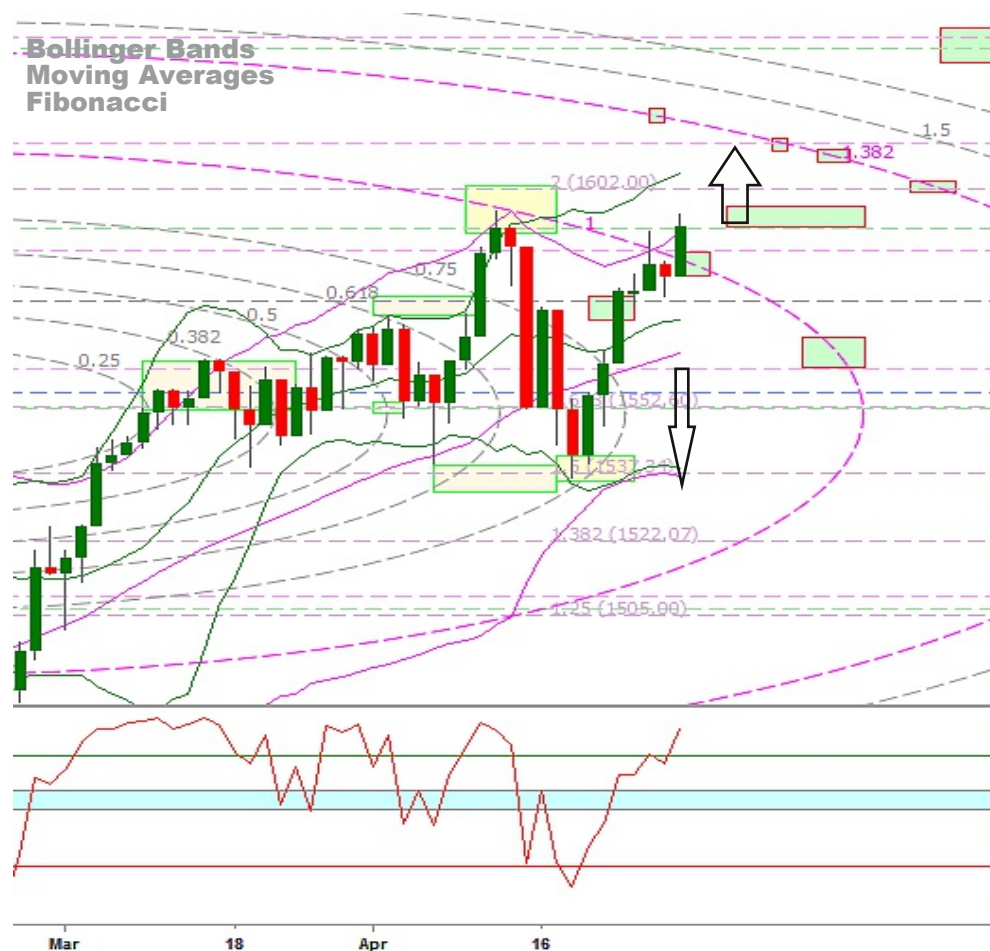


**DOWN
TREND**



**Sideways,
Tight Consolidation**

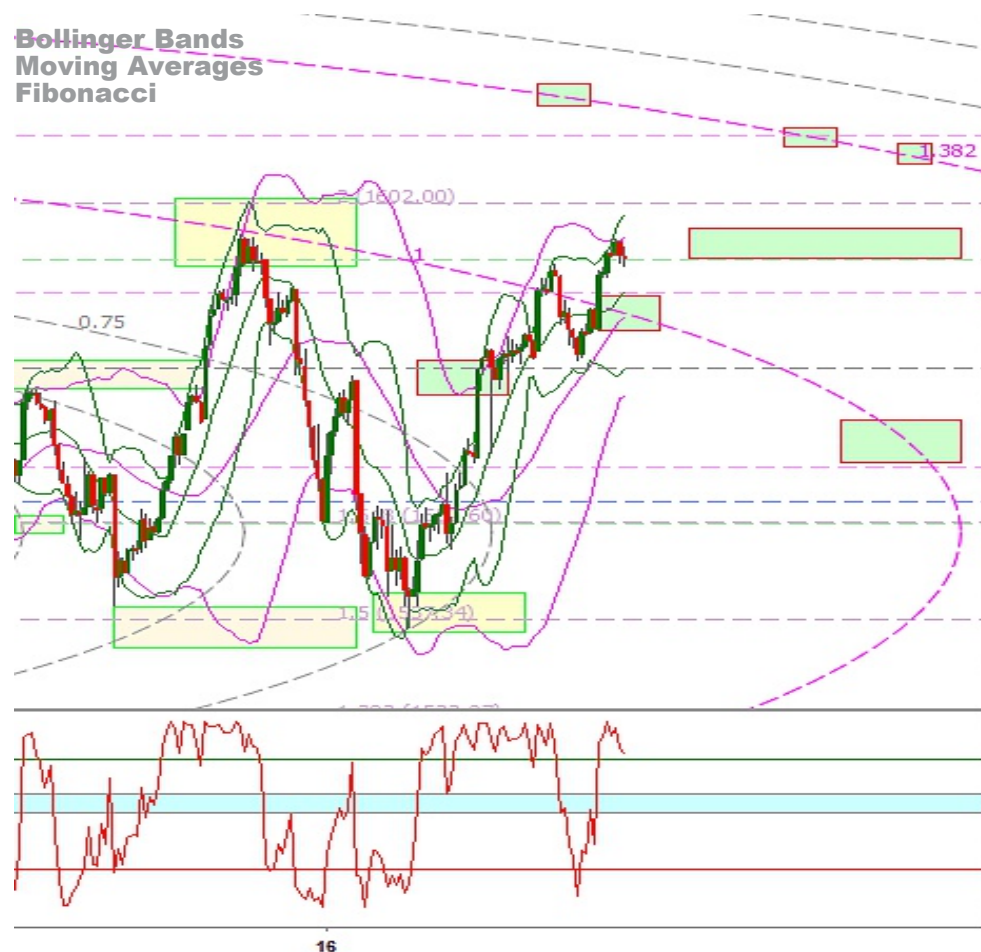
S&P 500 DAILY

MATA
DRIVERS

SUPPORT / RESISTANCE	channel	1,597.60	1,612.34 next Fib circle & lvl
FIBONACCI LEVEL	green	1,576.50	1,552.64 diamond edge, Fib lvl
			1,541.35 diamond lower s/r



The market drifted upward since last update, moving through the next HPTZ and finding resistance at the black dashed channel. Having reached the channel as well as the Fib circle, the market is at a technically significant point. Continuing to lift would break the channel and move off the Fib circle, implying that the market will be moving to the next Fib circle and area/level of resistance. OR, resistance could hold the market and it turns, heading back towards the lower channel and we see if there is any support from the right hand side of the diamond pattern. The W%R is lifted over the -20 level and indicates that there is still positive pressure on the market; we would expect to see it drop below the -20 level if the market is going to turn.

S&P 500 60 MIN**MATA
DRIVER\$**
Bollinger Bands
Moving Averages
Fibonacci
**TRIGGER****HPTZ**

SUPPORT / RESISTANCE	channel	1,597.60	1,612.34 next Fib circle & lvl
SUPPORT / RESISTANCE	2007 high	1,576.50	1,552.64 diamond edge, Fib lvl
			1,541.35 diamond lower s/r



We can see the market has lifted to previous highs and found resistance at the channel. The W%R here on the hourly is also lifted above the -20 level; however it has turned and is moving lower. Breaking the -20 level would be an aggressive trigger consideration for a move lower. Bouncing off the -20 level would be a trigger consideration for a continuation of the lift.

TRIGGER\$

Economic & Technical Analysis for the Active Trader

www.triggers.ca

ECONOMIC CALENDARS

Bloomberg

<http://www.bloomberg.com/markets/economic-calendar/>

U.S. Markets

**TRADING
ECONOMICS .com**

Global

<http://www.tradingeconomics.com/country-list/calendar>

Longer Term Dates of Interest

April 31st/ May 1st	FOMC
May 13th	PHI Cluster Turn Date
June 22nd	Bradley Turn Date

PLAN 2

TRIGGER\$ Charts Powered by

eSignal
smarter trading tools

TECHNICAL



MARKET ANALYSIS

TA Glossary *(list of TA abbreviations)*

HPTZ	High Probability Target Zone(s)
Fib	Fibonacci
ma	Moving Average
p/t	Price / Time Graph
s/r	Support & Resistance
TA	Technical Analysis
13ma & BB	Green
34ma & BB	Pink

Methodology Performance

as of Friday March 5th, 2013

TRIGGER\$ Updates are part of a Trading Methodology that uses the identification of High Probability Target Zones (HPTZ).

These targets are derived from the assimilation of several Technical tools and methods.

Through the application of the tools to determine HPTZ, they also set up trigger considerations for potential entry and exit placement.

Our Updates give the HPTZ that we have found as well as the most obvious technical triggers that have set up. There are usually several trigger considerations for each HPTZ and the traders own risk tolerances and trading strategy must decide for themselves which are appropriate. As noted in our disclaimer, this is not a trade advisory service. The updates outline and use a methodology *that can be used as the base for* an individuals personal trading strategy.

The trading methodology entails identifying the HPTZ **both above and below** the current market position. While we generally have a bias on market direction, we are not infallible. Identifying the HPTZ on either side of the market, and using the technical tools as trigger considerations, the trader eliminates all bias and psychological pitfalls and trades what the market actually does, as opposed to what is believed to potentially occur.

This sets up a purely technical trading system. Regardless of market

direction, the trader has a plan and method for successfully navigating the market.

You will note throughout the updates we post that the Methodology remains constant. That is, it does not change, shift or modify depending on market conditions. **Regardless of trending or non-trending markets, the methodology is applicable in all situations.**

While the methodology has been in development for several years, it is only recently that we have started to keep a track record of its progress. Through the publication of these updates, we have a real-time record of the success or failure of the method and identification of HPTZ, or a proof of concept. In July of 2012 we expanded our updates to include several markets and it is from this point that we have started collecting data from our methodology. For the moment, the sampling size is admittedly small. However it grows monthly and should soon enough begin to establish an acceptable statistic.

As we locate HPTZ on either side of the market, only those that are activated are included in the calculations. HPTZ are activated when the market makes a move in that direction (i.e. new wave), exceeding the current market boundaries (i.e. channels, pattern s/r's etc.). HPTZ identify targets for the next wave. If the next wave becomes apparent and moves outside current boundaries but does not make it to the HPTZ, then it is a miss.

Hits on price level, but misses at the exact location (time) are only counted as a hit if the call could reasonably be considered "close". That the market at some point reaches the price level is not enough to be considered as a hit – the p/t must "just miss" the time target to be counted as a hit on price but miss on time.

July 2012–Mar 1st 2013 HPTZ Forecast Multiple Markets Combined Totals	Totals / % All Markets
Total # of HPTZ\$ Forecasted	391
# Targets Hit: Both Price & Time*	332
# Targets Hit: Price Level Only*	26
TOTAL # ALL TARGETS HIT**	358
# Targets Missed	33
Hit % : Both Price & Time Only*	85%
HIT%: ALL TARGETS HIT**	92%

July 2012–Mar 1st 2013 HPTZ Forecast	SPX	USD	EUR/JPY	EUR/USD	VIX	GOLD	OIL
Total # of HPTZ\$ Forecasted	46	76	76	67	38	48	40
# Targets Hit: Both Price & Time*	39	64	61	58	34	40	36
# Targets Hit: Price Level Only*	1	5	9	4	2	4	1
Total # All Targets Hit**	40	69	70	62	36	44	37
# Targets Missed	6	7	6	5	2	4	3

* **Both Price & Time:** exact location for both price & time was achieved

* **Price Level Only:** price level was reached, but occurred outside of specified time frame. Only those price levels reached where the time element could be reasonable counted as "close" count as a Hit.

** **Total Combined** number of the Price & Time Targets Hit and the Price Level Only Targets Hit.